

## Dinosaur bean bag Instructions – ITHWL



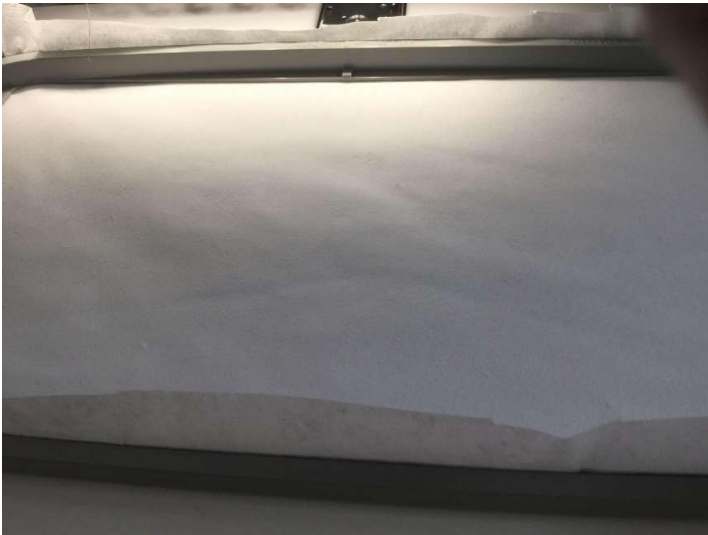
### Supplies

Fleece 2 X for the body

Scrap fabric for the scales 170mmx170mm

### Instructions

Hoop **stabiliser either tearaway or cutaway, either is fine**



Stitch placement line for base fabric



Place fabric over the placement line

Stitch tackdown

**DON'T TRIM**



Stitch the details of the fish



Stitch the placement line for the scales



Lay fabric over the placement line

Stitch tackdown



Trim around the scaels fabric



Stitch the satin stitch covering the fabric for the scales



Stitch the eye details



Cover the fish with the backing fabric

Stitch closing stitch

If using as a bean bag, stitch both bean stitches

If stuffing the frog only you can SKIP THE LAST step as it is just another row of bean stitching to help support the edges.

Take off machine

Take out of hoop

Trim leaving approx 5mm edge around the shape,

Cut the gate leaving approx 1.5cm to assist with turning.

If stuffing the fish only you can SKIP THE LAST step as it is just another row of bean stitching to help support the edges

When using as a bean bag you can use acrylic stuffing beads, white beans or brown rice.

We don't recommend using white rice as mice like it.

